



## Project Case Study

Project:

## Grimsby – Freshney Place

### PROJECT CLIENT:

Powell Williams

### STRUCTURE:

Elevated Service Deck

### PROJECT COMPLETED:

June 2021

### SPECIFIED PRODUCTS:

- Blueshield PmB

### AREA:

5,000m<sup>2</sup>

## Project Case Study

StructureCare were appointed as main contractor for the resurfacing and waterproofing works at Freshney Place. Freshney Place is a shopping centre in Grimsby, North East Lincolnshire. Located in the centre of Grimsby it is visited annually by 400,000 shoppers and employs over 2000 retail workers.

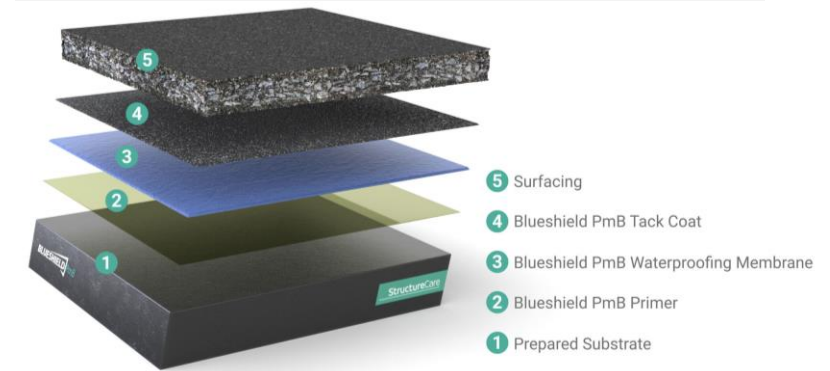
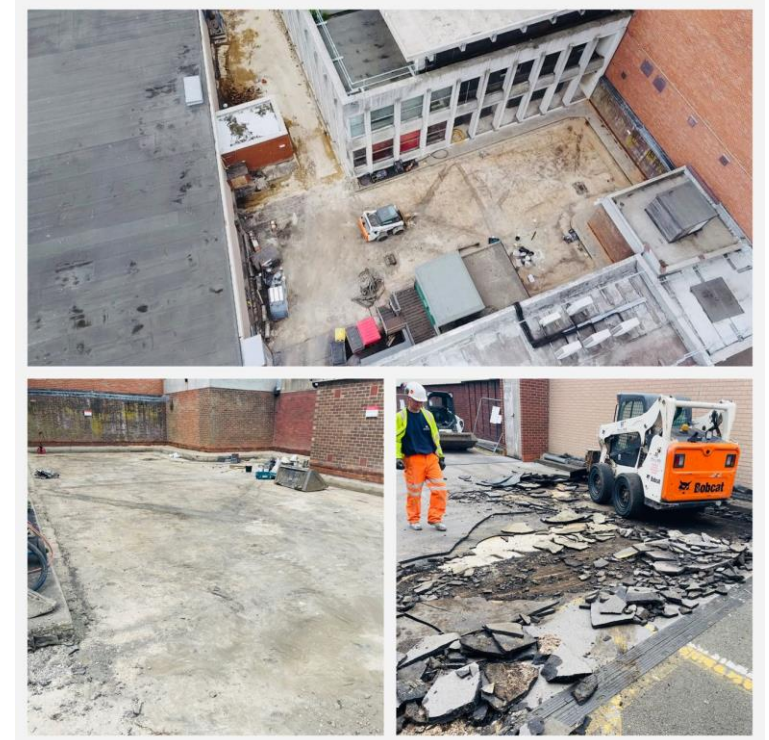
The existing waterproofing system had failed, and the service deck had been the source of several leaks into retail units below therefore a long-term solution was required that halted the passage of water through the service deck.

After a complete site assessment by one of our specialists, a detailed bespoke specification was issued to the client and our offering was determined as the most suitable solution to resolve the existing problems.

StructureCare works involved the removal of all asphalt in both the roadway and footpaths to expose the concrete deck. The decks were then vacuum shot blasted to prepare the substrate ready for the application of the waterproofing membrane.

StructureCare specified and installed their BlueShield PmB waterproofing system. Blueshield PmB is a rapid curing, two-part, spray applied, durable corrosion protection & waterproofing material. The high performance system is 100% polyurethane, containing no fillers or additives and is VOC free. Once applied, Blueshield PmB has exceptional bond strength to all commonly used substrates, has a life expectancy in excess of 30 years and holds British Board of Agrément approval.

The Blueshield PmB provides a completely homogenous, seamless waterproofing solution and when combined with tarmacadam surfacing it proves a heavy duty solution which provides optimum waterproof protection.





## Project Case Study

Following the application of the Blueshield PmB waterproofing our protective tack coat and HRA surfacing was laid. To complete the project thermoplastic line markings were applied to the deck.

A key factor in the award of the contract to StructureCare, part of the CPG Europe Group, is the company's unique position within the sector, as both a manufacturer and installer of the Blueshield system.

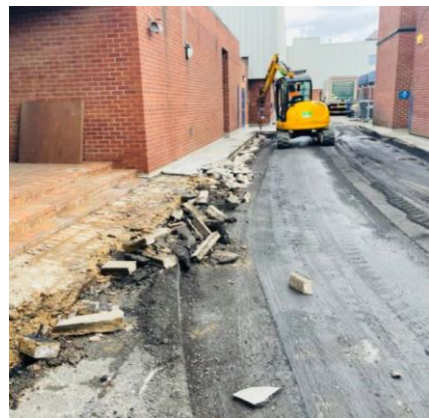
The project was a huge success for StructureCare and the service deck is now watertight, the works were completed to everyone's satisfaction with Wayne Nellis, Project Manager, StructureCare explaining: *"The project went smoothly and was delivered in line with our proposals set out during the pre-construction phase of the project. I am delighted with the finished result and I look forward to hopefully delivering future projects at the shopping centre".*

If you have water leaking into your structure from your service deck please do not hesitate to get in touch with StructureCare for a free site survey and specification. Email [info@structurecare.com](mailto:info@structurecare.com) or complete our online enquiry form: <https://www.structurecare.com/contact-us/>

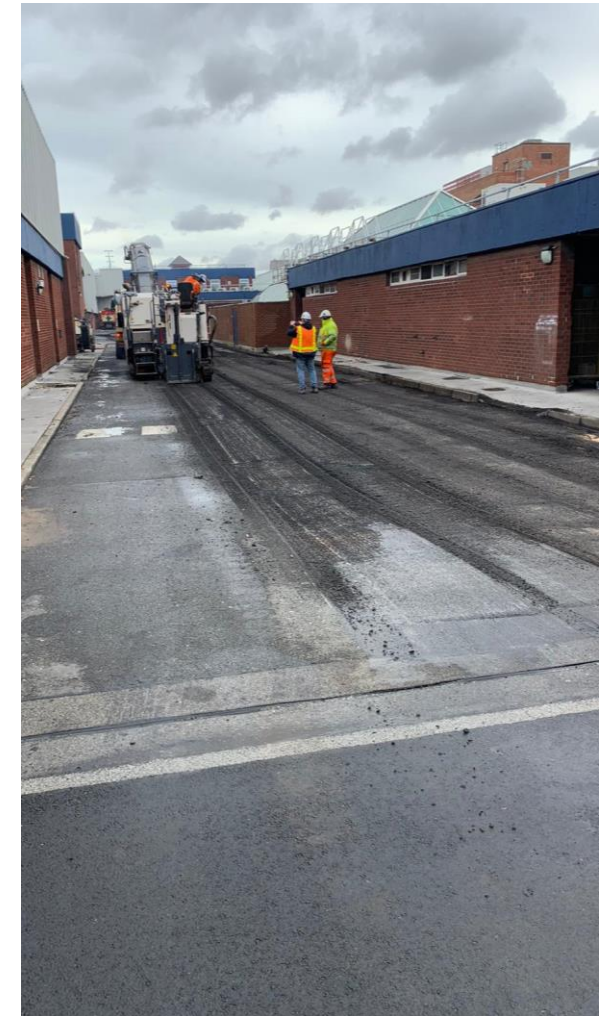




## Removal



# StructureCare





## Waterproofing



# StructureCare



## Surfacing





## Completion



## CONTACT US

StructureCare provides comprehensive Technical Support Service for architects, specifiers and surveyors on both new build and refurbishment projects.

t: +44(0)1270 439909

e: [info@StructureCare.com](mailto:info@StructureCare.com)

w: [www.StructureCare.com](http://www.StructureCare.com)