



## PROJECT CASE STUDY – HARROGATE CONVENTION CENTRE

**Project Client:** Restek

**Specified products:**

**Structural Waterproofing:** Blueshield PmB

**Project Duration:** 2 Weeks

**Project Completed:** October 2020

**Area:** 1,500m<sup>2</sup>



## PROJECT OVERVIEW

StructureCare was engaged by Restek to install 1,500m<sup>2</sup> of Blueshield PmB structural waterproofing to the podium slab concrete up-stands prior to the installation of various new surface finishes. To protect the convention centre against water ingress the project required a combined waterproofing solution that would not only be effective but would also be able to cope with the complex detailing and on-site challenges. Blueshield PmB was selected as the ideal solution.

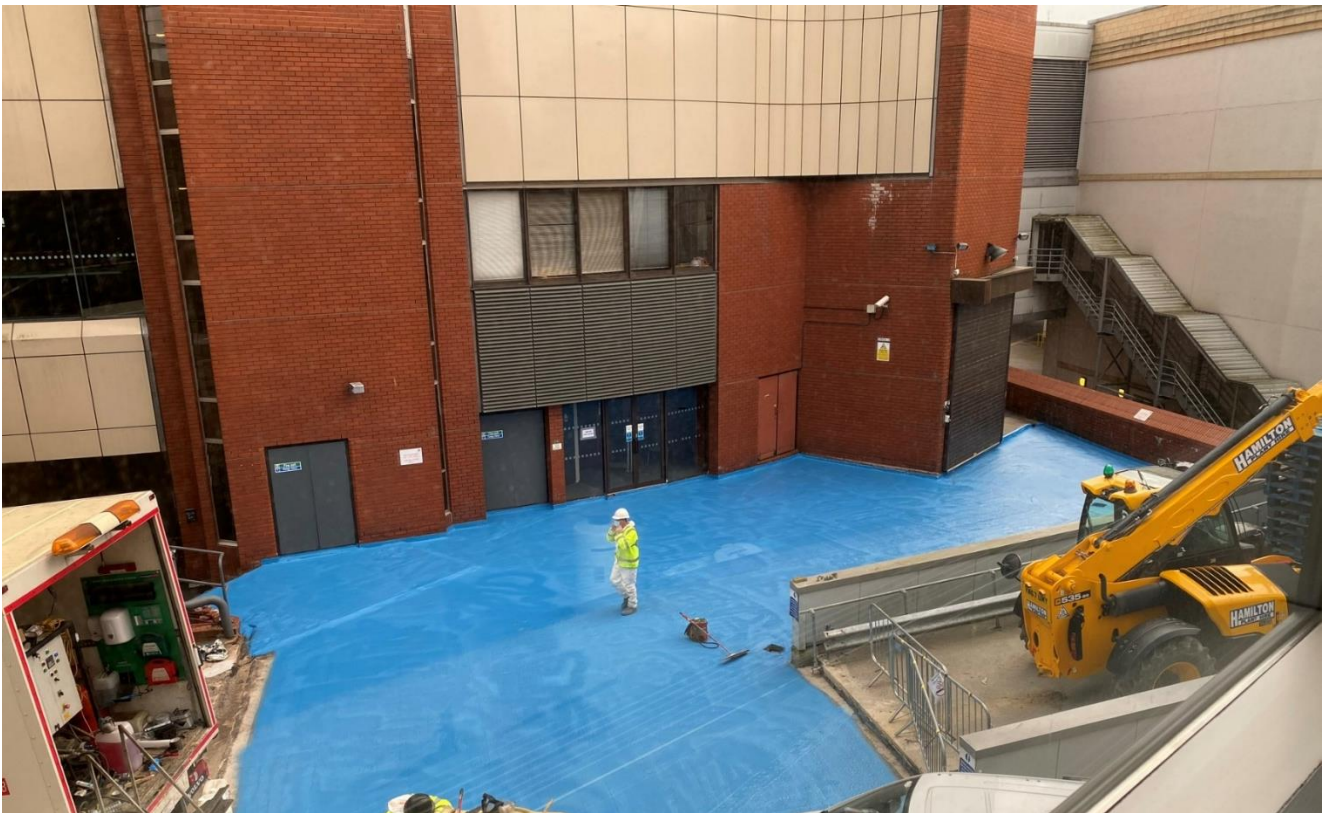
Blueshield PmB is a rapid curing, two-part, spray applied, durable corrosion protection & waterproofing material. The high performance system is 100% polyurethane, containing no fillers or additives and is VOC free. Once applied, Blueshield PmB has exceptional bond strength to all commonly used substrates, has a life expectancy in excess of 30 years and holds British Board of Agrément approval.

Removal of the existing surfacing was undertaken followed by surface preparation of the concrete decks. After preparation was complete the substrate was sealed with Blueshield PmB primer to enhance the adhesion of the subsequent membrane. Once the primer had cured the Blueshield PmB was spray applied to all areas. Due to the membrane being spray applied potential weak spots are eliminated such as, seams, joints and fixings. The Blueshield PmB provides our clients with a completely homogenous, seamless waterproofing solution.

To ensure StructureCare 'get it right first time' we undertake strict quality control measures. These include concrete moisture and temperature checks, air temperature reading and film thickness tests carried out throughout application which helps to ensure the required thickness is achieved.

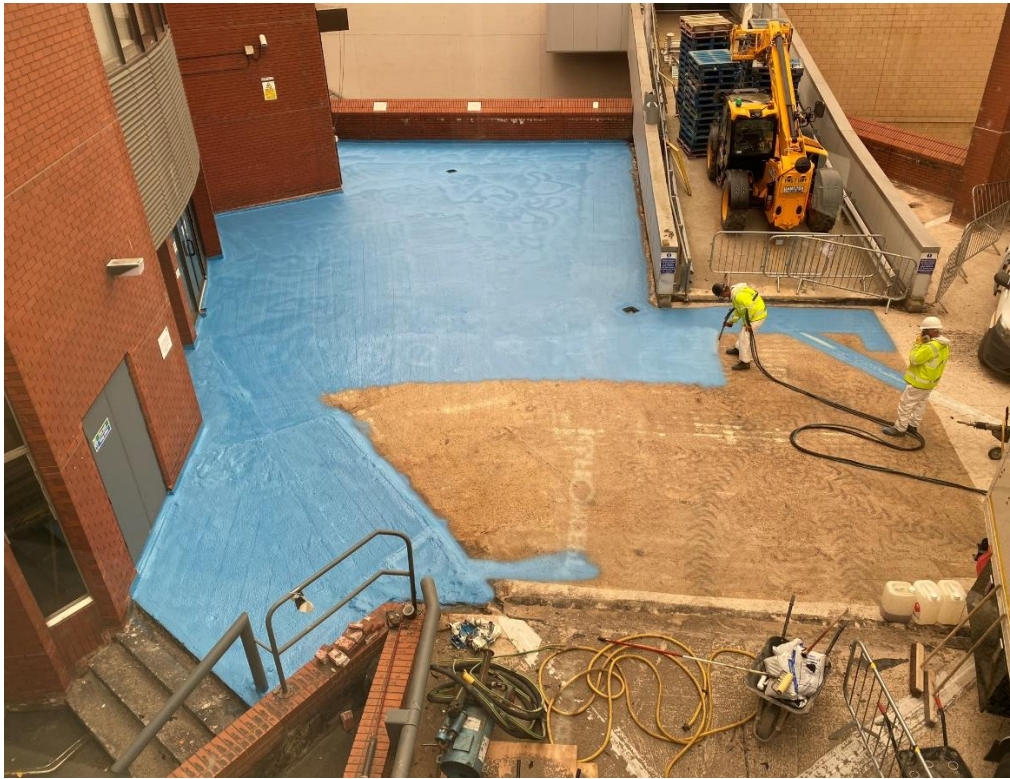
StructureCare provides comprehensive Technical Support Service for architects, specifiers and surveyors on both refurbishment and new build works.

We offer a wide range of structural waterproofing solutions suitable for a range of applications. Please get in touch at [info@structurecare.com](mailto:info@structurecare.com) if you would like to find out more about StructureCare's structural waterproofing offerings.

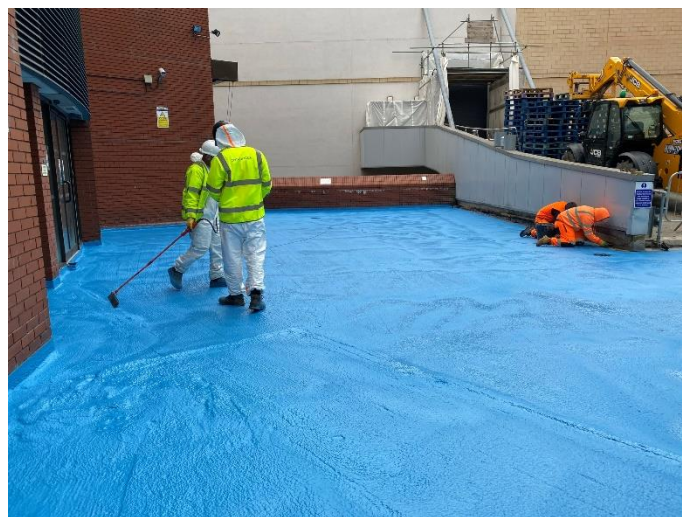
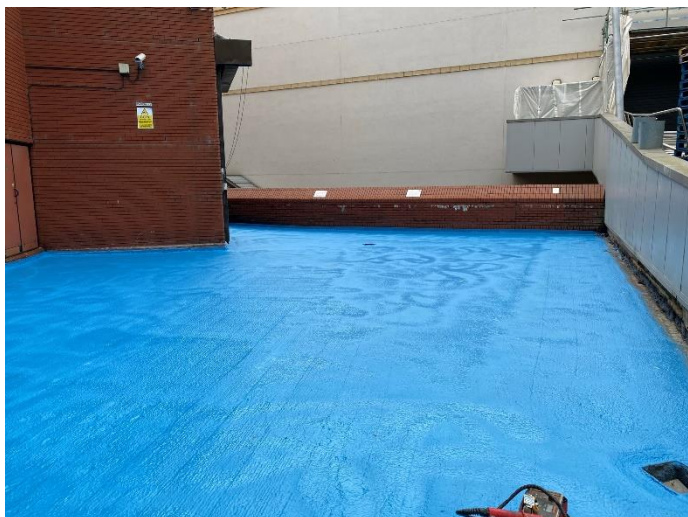




PROJECT PHOTOS







#### HEAD OFFICE

##### StructureCare

Booth Lane

Sandbach

CW11 3QF

United Kingdom

t: +44(0)1270 439909

info@structurecare.com

#### REGIONAL OFFICES

##### Wigan

Coupland Road

Hindley Green

WN2 4HT

United Kingdom

##### Coventry

Torrington Avenue

West Midlands

CV4 9TJ

United Kingdom

##### Leicester

Unit 2 Dorsey Way

Leicester

LE19 4DB

United Kingdom

##### Crayford

Unit F, Acorn Industrial Estate

Crayford Road, Dartford

DA1 4FT

United Kingdom